

Blackbushe Weekend 2023 Information Pack



Dear Team Manager. Thank you for your entry to Blackbushe race

Please read these notes in conjunction with the online drivers briefing slide pack.

There is a mandatory online briefing on Tuesday 29th August at 19:30 via zoom. These will be open for any participants but the team manager or adult nominee must attend. Zoom login details will be emailed to Team Manager on Tuesday and be published in our FB Group. Team manager or nominee is expected to cascade the briefing to all their drivers and supporters.

Please check that we have your team correctly listed below and contact me if there are any errors.

Many thanks too to Camberley Kart Club for letting us use their fabulous venue once again. It is much appreciated and of course we couldn't run this event at all without their generous support.

www.camberleykartclub.com

If you don't already know, we have a website at www.pedalcarracing.info and a Facebook group at <https://www.facebook.com/groups/128453854681/> (search for "British Pedal Car Championship")

Thank you all and I look forward to seeing you there!

Jes, Dave & Rose Ralphs

Event Organisers

1. Rules and Regulations

These events are run under the auspices of the British Federation of Pedal Car Racing and form part of the British Pedal Car Championship. as published at <http://pedalcarracing.info/information/rules-regulations> In conjunction with Covid Event Protocol document posted on our Facebook group and emailed to teams

2. Circuit: location & information

The race circuit is Blackbushe Kart Track, home of Camberley Kart Club, just off the A30 to the west of Camberley and Blackwater.

Google Maps link:

<http://maps.google.co.uk/maps/ms?ie=UTF8&hl=en&t=h&msa=0&msid=210885305175702070348.000498df4141f9ba54e56&z=15&iwloc=000498df44dc9ce3f3fc3&f=d&daddr=Blackbushe+entrance+%4051.322486,-0.861461>

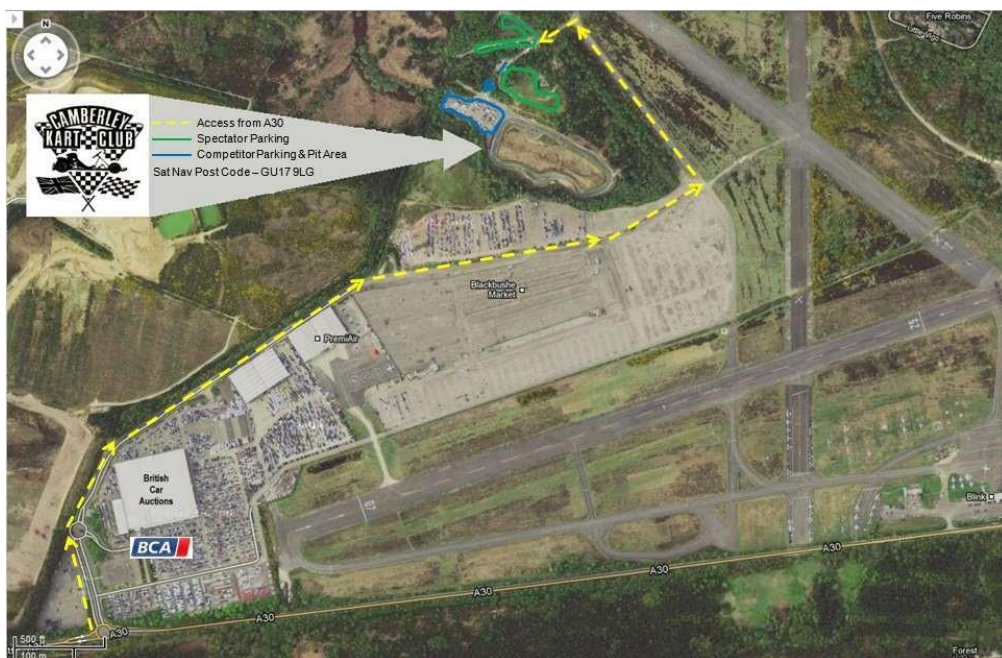
Or search Google Maps for “Blackbushe entrance @51.322486,-0.861461”

The roundabout on the A30 that is the entrance to Blackbushe can be found by searching your Satnav or Google maps for a latitude/longitude of “51.320716, -0.860968” or +51° 19' 14", -0° 51' 39"

Ordnance Survey map sheet 175, grid reference SU794585

What3words: [///bronzer.mailer.tearfully](http://www.what3words.com/bronzer.mailer.tearfully)

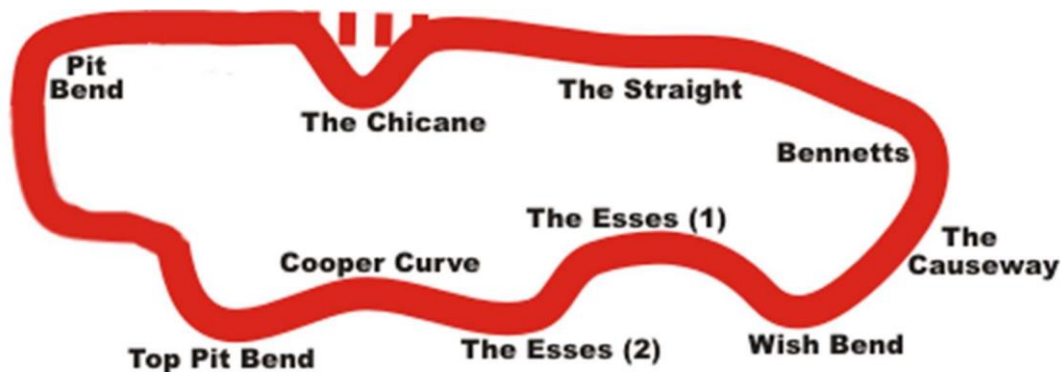
Once at roundabout proceed to security gate and follow map below



Motor vehicles may be brought on to the circuit for unloading. Vehicles carrying only people and their kit should be left in the car park - it's not far to walk. Please unload as quickly as possible and then remove your motor vehicles as this will help us keep to the race timetable.

ALL MOTOR VEHICLES ON THE CIRCUIT ARE RESTRICTED TO WALKING PACE AND MUST PROCEED WITH LIGHTS ON AND HAZARD LIGHTS FLASHING. Please do not drive over the timing mat or under the gantry.

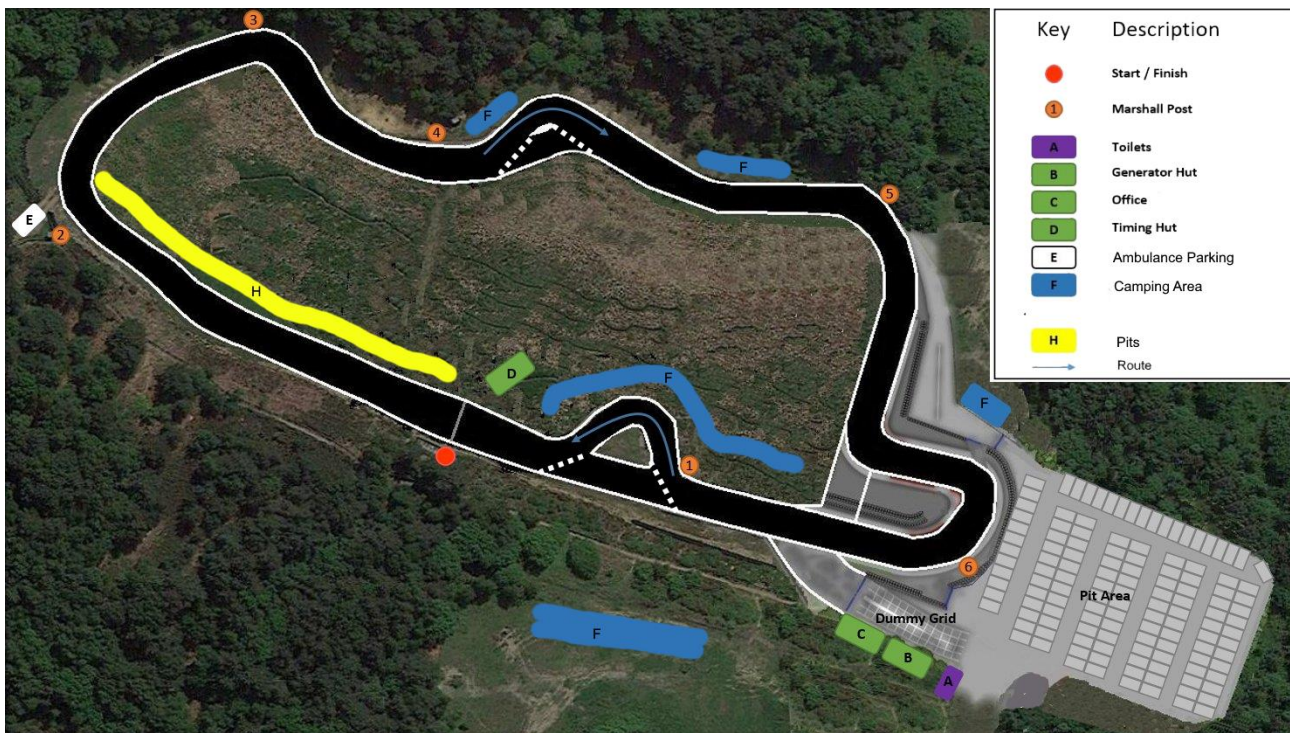
3. Circuit: Plan



All races will be run clockwise and will use The Chicane.

The lap counting / finish line is shortly after the exit of "The Chicane"; pits are along "The Straight", on the infield (right hand) side of the track.

The infield area is off limits due to the "wildlife" that lives therein and the possibility of broken glass etc. If you need to get to the other side please use the footpath or walk around.



4. Facilities etc

The pits will be in their usual location down the main straight (see plan) and are not allocated, it is first come best spot. There is enough space but please be sensible and also keep any tents/gazebos away from the edge of the track. All motor vehicles must be parked in the car park but trailers can remain in the pit provided they are parked well away from the track edge. No vehicles/trailers are to be parked on the offside or bottom corner.

The pit lane is NOT part of the race track. The pit lane will be “open”, i.e. cars can enter and leave the pit lane at any safe point and it is the driver’s responsibility to ensure this is safely executed. You must still come to a complete stop in your pit box before changing drivers, exchanging drinks etc. If you need to work on a car please move it behind the white line i.e. off track.

Toilets are now in the cabin by the pit bend but the **water supply is unsafe to drink**, and is limited so please use sparingly. Hand sanitiser may be provided and some facilities may be taped off. Please make all team members aware of this. Please bring your own drinking water and food. Please take your litter home with you due to wildlife on site.

No onsite catering is provided but there are shops and takeaways nearby. If you are cooking for yourself please ensure that all stoves are kept off the ground and be mindful of possible fire risk and wildlife in the infield and woods Tinfoil disposable BBQ are not allowed.

If you bring a generator, you must also bring suitable and adequate fire-fighting equipment.

Overnight camping is permitted subject to the rules of your own organisations and Camberley Kart Club. Please pitch tents well away from the racing line/track edge in the marked areas. If you bring a vehicle onto the track after racing has finished (eg a campervan) it must be moved back to the car park by 09:00 Sunday morning. Failure to do so will incur a penalty for your team.

5. Volunteer Marshalls and Race Control / Lapcount

Each team has been requested to provide a volunteer to assist with marshalling certain corners, mainly at point 3/4 (by the causeway) & the must have point 6 (pit bend). Marshall rota will be distributed on the day, before the start of the event.

Each Marshall point will have Flags & Radios. Please report incidents to Race control who will instruct what action to take and appropriate flags.

LapCount / Race Control

	Race Control	Lap Count	Scrutineer / Misc
Saturday	Dave & Rose R	Scarzy	Chris F, Dave R
Sunday	Dave & Rose R	Scarzy	Chris F

Marshall Rota

Saturday Sprints	Marshal point 3 (Top of Hill)	Marshall point 6 (Bottom of hill)
Race 1 13.15 – 13.45	Royce	Trinity Zoomers
13.45 – 14.15	Apollo	Rose
Race 2 14.35 – 15.05	Oddballs	Apollo Racing
15.05 – 15.35	Trinity Zoomers	Pink Panthers
Race 3 15.55 – 16.25	Patriot ESU	Royce
16.25 – 16.55	Swebbelli	Apollo
Race 4 17.15 – 17.45	4th Thorpe Bay	Royce
17.45 – 18.15	Team 105	Trinity Zoomers
Race 5 18.35 – 19.05	Pink Panther Racing	Swebbelli Racing
19.05 – 19.35	Royce	Oddballs

Sunday 100 mile	Marshal point 3	Marshall point 6
10.00 – 10.30	Royce	Trinity Zoomers
10.30 – 11.00	Apollo	Rose
11.00 – 11.30	Oddballs	Apollo Racing
11.30 – 12.00	Trinity Zoomers	Pink Panthers
12.00 – 12.30	Patriot ESU	Royce
12.30 – 13.00	Swebbelli	Apollo
13.00 – 13.30	4th Thorpe Bay	Royce
13.30 – 14.00	Rose	Trinity Zoomers
14.00 – 14.30	Pink Panther Racing	Swebbelli Racing
14.30 – 15.00	Royce	Oddballs
15.00 - Finish	Trinity Zoomers	Rose

6. First Aid

First aid will be provided by each team with backup from Race control. Please notify us of any incidents so they can be logged in the accident book. Major incidents will result in the event being red flagged until resolved. If you are unable to treat an incident yourself, please contact us for assistance.

7. Lights and lighting.

Cars must carry lights on the Saturday to BPCC Specification and they will be required to be lit for the whole of race 5 and whilst still on the track after race 5 until parked in pits off track. Track lighting will be provided in a similar manner to Shenington but will not be on all night. The toilet block etc will be lit whilst the generator is running but again not overnight. You will need head torches and lanterns if camping over.

8. Scrutineering

All cars must pass scrutineering. Scrutineering is to check cars for a bare minimum safety standard and rule compliance. In all cases, the Scrutineers word is final. Scrutineering will take place in the coned off area by the chicane

9. Race formats and grid order

Saturday. 5 x 1hr sprints with 20min interval in between races

Sunday. 100 miles or 5hr 30min

The grid will be in championship order and will be recalculated for Sunday

Saturday Grid

Pos	Car	Team
1	1	Royce
2	2	Apollo Racing
3	4	Royce
4	6	Swebbelli Racing
5	9	Oddballs
6	8	Royce
7	7	Royce
8	12	Swebbelli Racing
9	10	Oddballs
10	5	Apollo Racing
11	11	Royce
12	15	Team 105 Racing
13	18	Pink Panther Racing
14	21	Pink Panther Racing
15	23	Trinity Zoomers
16	16	Patriot ESU
17	24	Trinity Zoomers
18	25	4th Thorpe Bay Scout Group
19	33	Trinity Zoomers
20	35	Swebbelli Racing
21	14	Royce
22	73	Spiderman
23	74	The Witch
24	75	La Bouchonnette
25	76	Tigrou
26	77	Royce

Any car not capable of taking the start at the designated time, either mechanically or due to an absent driver, must also be removed to allow the race to start.

If a driver has a problem on the grid (or during racing), please wave a hand clearly to alert following cars.

10. Racing etiquette

Racing etiquette forms part of our racing rules and will be covered by the Race Controller at the Race Briefing each morning; however, here are some key points for those new to the BPCC, which may differ from pedal car races you have previously experienced.

1. No push starts! It is forbidden to give your car a push-start from the pits.
2. It is the faster driver's duty to overtake safely. The driver of the slower car is free to take any reasonable racing line but must not deliberately impede any other car.
3. If you have a complaint about a team or driver, tell the Race Controller as soon as possible.
4. Flags and/or lights will be displayed to warn of incidents etc. Yellow means slow down and be prepared to stop, Red means stop and await instructions. A black flag shown to a driver means proceed to pits and fix issue with car or drivers helmet/clothing. Green means incident/track is clear.

11. Inclement weather

For those not used to pedal car racing, it is worth pointing out that, in the event of rain, fog, thunder etc the race carries on pretty much regardless.

Please make sure yourselves and your respective teams have appropriate clothing and tentage!

In the event of heavy rain, the inside line through Bennetts will quite probably flood and all bends will be quite slippery.

12. Lap counting and results

We will be using both our existing automatic lap counting system and its replacement. Please use your existing old-style transponder, if you need a replacement or a new one please email 2020@pedalcarracing.info . RFID tags for the new system will be given out at scrutineering along with instructions on where to affix them to the car, please do not remove your old transponder.

There may be a big screen at Race control, but we will have the tablets again. If they run low on battery please ask for a charged powerbank at lap count.

Live timing (and messaging) will be online via <http://livetiming.pedalcarracing.info/>

13.Event Timetable

Saturday

09:00 Organisers can access site.

10:15 Teams can arrive. Please do not arrive early as you will not be allowed entry

10:30 Booking in and scrutineering (If possible, we will start these earlier).

12:00 All motor vehicles must be clear of the circuit.

Practice will be permitted once the circuit is declared open, for cars that have passed scrutineering.

13:00 Practice ends, form up grid. Teams not presenting car when called to grid will forfeit their position and start from the back.

13:15 - 14:15 Race 1. 60 minutes

14:35 – 15:35 Race 2. 60 minutes

15:55 - 16:55 Race 3. 60 minutes

17:15 - 18:15 Race 4. 60 minutes

18:35 – 19:35 Race 5. 60 minutes. Lights required on cars

19:35 Racing Ends – Non camping teams pack up

20:00 Certificate Presentations

22:00 Gates Locked

Sunday

07:30 Circuit gates open.

08:00 Toilets closed for cleaning/resupply – ***please do not block vehicle access to the toilet block***

08:30 Booking in and scrutineering; as per Saturday.

09:00 All motor vehicles must be clear of the circuit. Practice as per Saturday.

09:45 Practice Ends, form up grid

10:00 Race start:

15.30 Race ends when lead car completes 286 laps or 5 1/2 hours, whichever comes sooner

16.00 Certificate Presentation

16:30 Circuit Closes - All Teams off site

To retain good relations with Camberly Kart club all Teams, vehicles and equipment must be off circuit and outside the entrance gates (not in the car park) before this time – No exceptions. If your transport is late you will have to move/carry everything outside the gates and wait offsite.

14.Race suspension

The committee reserves the right to suspend and / or end the event at any time if they believe it to be necessary. Scenarios could include:

- Any breaches in basic race protocols.
- Any abuse resulting in guidance or instruction from volunteers to attendees

15.Entry List

PC1

1 Royce

2 Apollo

4 Royce

5 Apollo

6 Swebbelli

7 Royce (PCF)

8 Royce

9 Oddballs

10 Oddballs

11 Royce (PCD)

14 Royce (PCD)

15 Team 105

73 Spiderman (PC1Z)

74 The Witch (PC1Z)

75 La Bouchonette (PC1Z)

76 Tigrou (PC1Z)

77 Royce (PCD)

PC2

35 Swebbelli

PC3

16 Patriot racing (PCF)

PC4

12 Swebbelli

18 Pink Panthers

23 Trinity Zoomers

25 4th Thorpe Bay Scouts

33 Trinity Zoomers

PC5

21 Pink Panthers

24 Trinity Zoomers

17. Next Event

Our last race of the year is at Curborough Sprint Circuit, Staffordshire on Saturday 30th September

Full details at <http://pedalcarracing.info/races/curborough/>

Entries accepted by hand at Blackbushe or enter online <https://shop.pedalcarracing.info/race-entry>